

# Uni Connect: Data snapshot 2022-23

Uni Connect is made up of partnerships between universities, colleges and local organisations to help school and college students understand their higher education options. It provides experiences of universities and colleges and information on what higher education is like, including what courses there are and explaining the finance system.

The programme aims to ensure that access to higher education is not limited by background and is targeted at learners who are less likely to go to higher education.

This snapshot presents Uni Connect data for academic year 2022-23. This was a year when funding for the programme was reduced to £30 million from £40 million the previous year. This snapshot is a continuation of previous data reporting collected from programme monitoring and reports on the same categories as the 2021-22 snapshot.

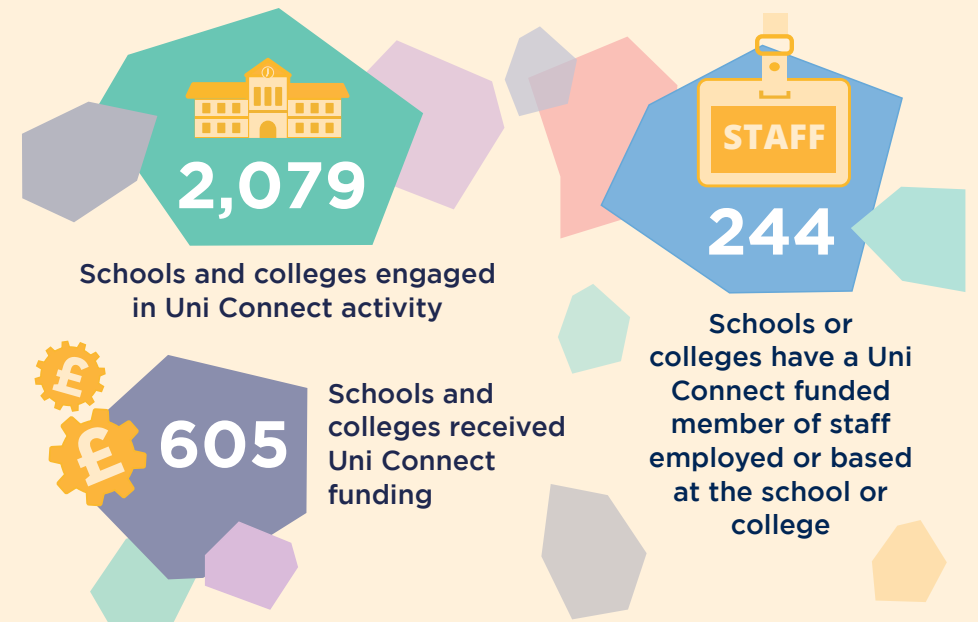
## Learner engagement

### Uni Connect learners engaged



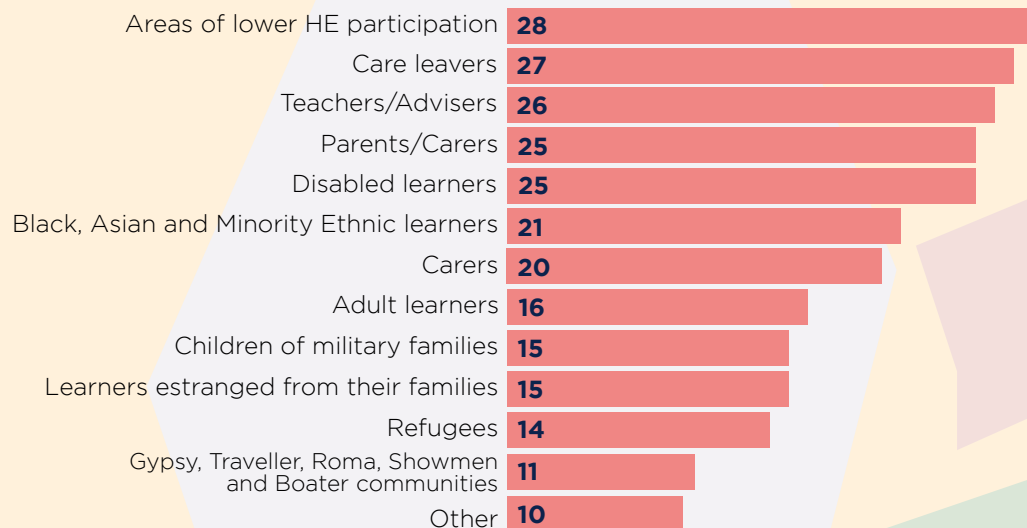
## School and college engagement

(August 2022 - July 2023)

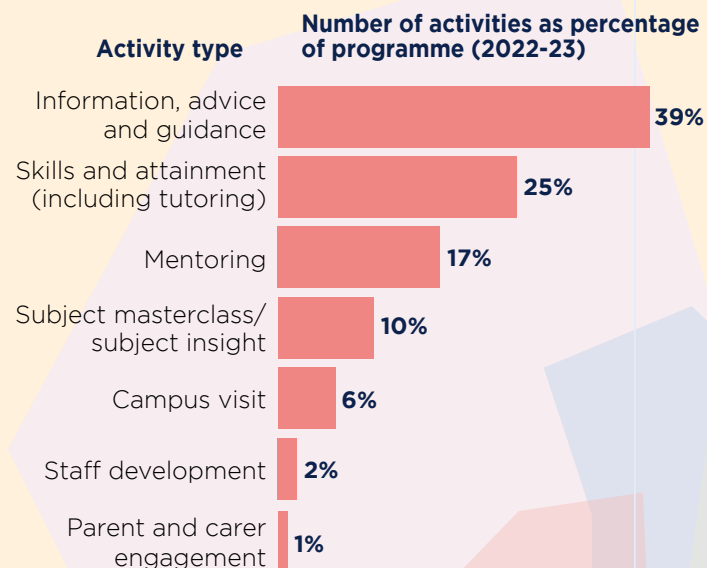


## Groups engaged in Uni Connect activities

### Number of partnerships engaging with different groups through strategic outreach initiatives



## Uni Connect activities delivered



"I think I am now in a better place to make decisions about my future as I know about more opportunities that are on offer around the country."

Uni Connect learner

"I had an enjoyable time that has been full of activities that are filled with things that I can use to develop myself and gain more knowledge. All staff were very welcoming and I have learnt a lot about uni life. This had made me a lot more comfortable in the idea of my future and I'm thankful."

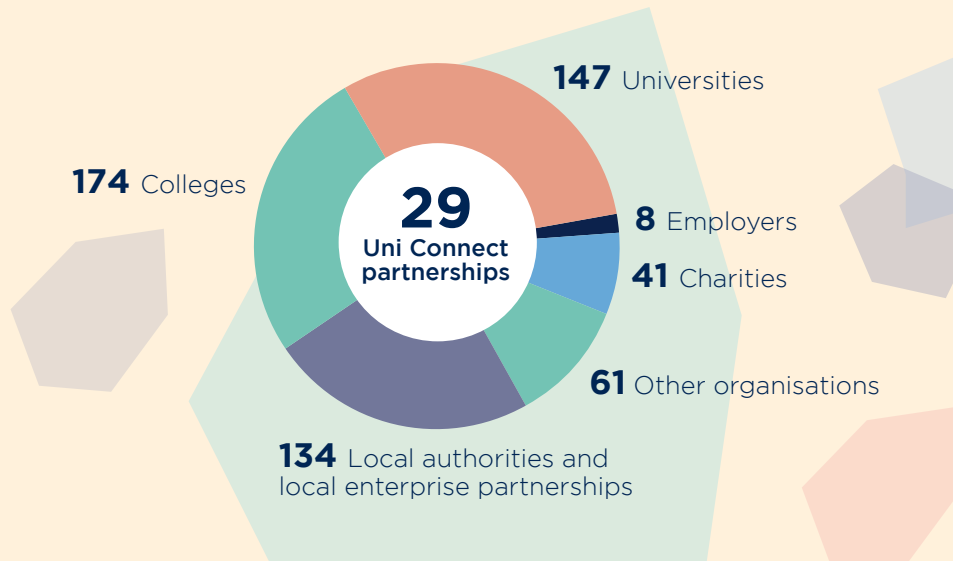
Uni Connect learner, summer school

"For me it's broadened my horizons, the opportunities, so I know what I can do, and what I need to do to get the qualifications."

Uni Connect learner

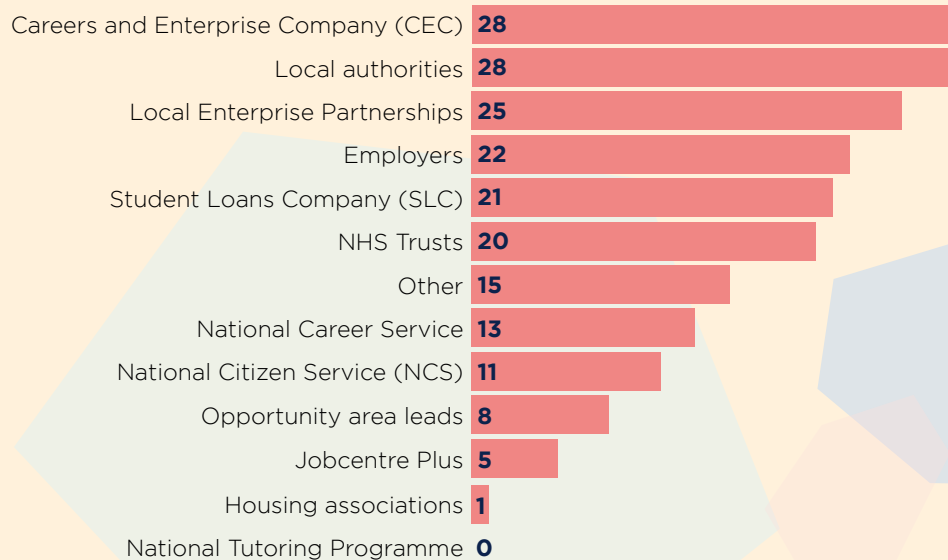
## Uni Connect collaborative partnerships

### Partners involved in Uni Connect



## Working with other partners

### Number of partnerships collaborating with different organisations



“This has inspired the students to want to attend university. Many students had not thought this was possible until today.”

Teacher

“The mentoring process was educational and interesting and will be useful in later life. It has taught me things that would have previously put me off going into higher education. I realise that it isn’t as stressful as I thought it might be.”

Uni Connect learner, mentoring recipient

## Future priorities



A new focus for Uni Connect from 2022-23 was on raising the attainment of school students in Years 7-11. Alongside offering information, guidance and experiences of higher level study in universities and colleges, Uni Connect partnerships also developed plans and trialled pilot activities like tutoring, support with study skills and preparing for exams, to help increase attainment levels of eligible students. Full programmes of attainment raising activity were implemented in 2023-24.

Alongside attainment raising, Uni Connect continues to work with schools, colleges and other local partners to coordinate activity in their area to support equal access to higher level study for learners most at risk of not accessing higher education.

"I felt this year's programme was the best yet. The sessions were really good, and the celebration was excellent. The workshops were really interactive and informative. The tour was also excellent giving us snippets of information we didn't know about the university and student life."

Teacher

"I saw a real change in motivation and attainment from my son during and following the project."

Parent